

# FORMICA® LAMINATE BY FORMICA GROUP

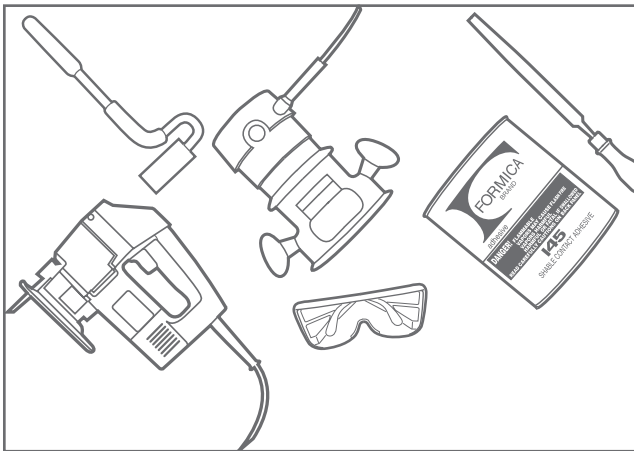


## DO IT YOURSELF SURFACING FORMICA® BRAND LAMINATE

### INSTALLATION INSTRUCTIONS FOR EASY LAMINATE SURFACES

Give your kitchen or bath a fresh new look with Formica® brand laminate. With careful planning you can do-it-yourself without the wait or additional labor costs. You can get results that will make you glad you did it yourself.

Formica® brand laminate is easy to install, easy to clean and care for. That means your new countertops will give you years of carefree pleasure and enjoyment. Choose from a large variety of colors and patterns to get the look you want.



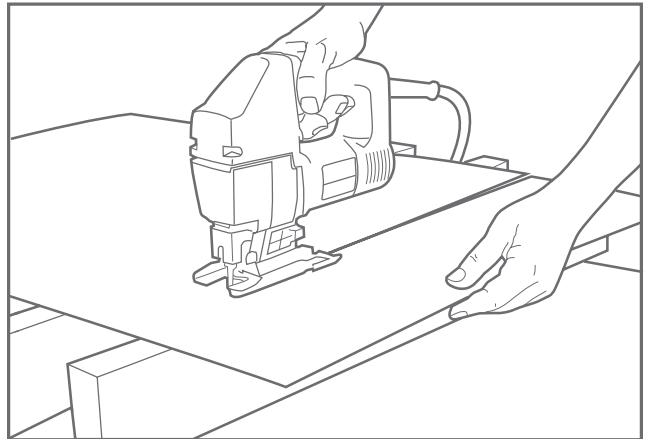
#### STEP 1: GETTING STARTED

Having the right tools on hand will make the job go quickly and easily. Keep in mind that you should work in a well-ventilated room and wear safety glasses when using any power tool. Before beginning, read adhesive precautions and directions.

If you are building new countertops, particleboard is recommended for the core material. On countertops with square edges, Formica® brand laminate can be installed over the existing laminate – provided it has been cleaned, degreased and lightly sanded.

#### REQUIRED TOOLS AND MATERIALS:

- Saber saw and metal cutting or fine-tooth cutting blades
- Safety glasses
- J-roller
- Router and laminate trimming bit
- Fine tooth mill file
- Brush, roller and trowel (see adhesive can for recommendations)
- Formica® brand contact adhesive
- Dowel rods



#### STEP 2: MAKE THE CUT

Before cutting your laminate surface, check corners with a carpenter's square so you won't have problems later. Cut laminate with a saber saw, using a fine tooth blade or a table saw with fine carbide tipped blade. If needed, also cut edge strips for Formica® brand laminate, or wood moldings can be used as edging.

**WARNING:** Measure surface to be covered carefully. Cut core material to size. Be sure to cut laminate surface  $\frac{3}{8}$ " to  $\frac{1}{2}$ " larger than the surface to be covered.



#### STEP 3: PUT IT TOGETHER SURFACES EDGES:

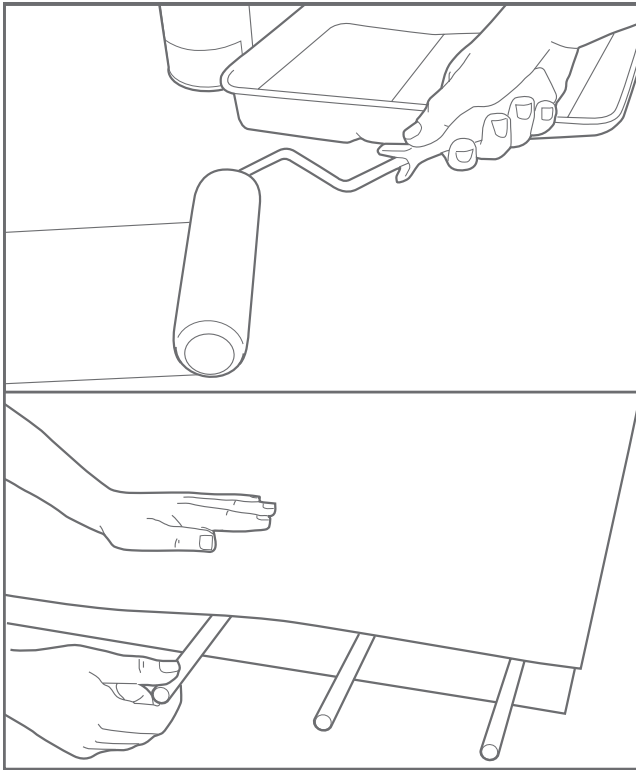
- Apply adhesive to laminate edge strip, following instructions on adhesive can
- Apply 2 coats of adhesive to core edge of countertop
- Bond edge strip to core using pressure

**NOTE:** Some adhesives contain flammable solvents. Follow instructions on adhesive can.

# FORMICA® LAMINATE BY FORMICA GROUP

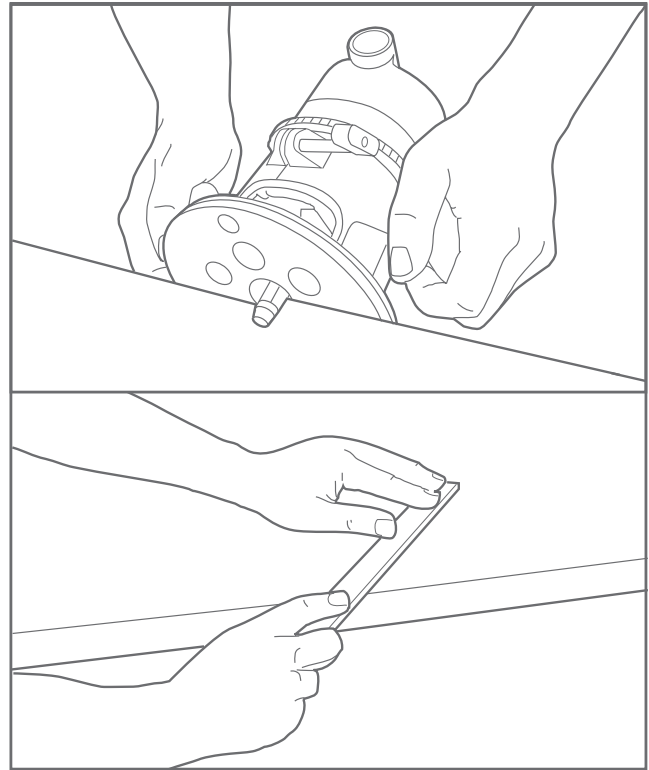


## DO IT YOURSELF SURFACING FORMICA® BRAND LAMINATE



### STEP 4: PUT IT TOGETHER SURFACES:

- Apply adhesive to back of laminate with a roller. Follow instructions on adhesive can
- Apply adhesive to core (dirt-free particleboard or old surface)
- Allow adhesive to dry completely
- Position dowel rods 6" apart on core
- Position laminate on top of dowel rods
- Align surfaces and slide rods out
- Immediately apply pressure with a J-roller



### STEP 5: FINISHING TOUCHES

- Trim excess with router and laminate trimming bit
- File edge flush, removing sharp edges

**NOTE:** To prevent moisture damage to the core materials seal all seams, including a backsplash, with caulk.

### TECHNICAL SERVICES

Technical assistance may be obtained through your local Formica® Brand Products Distributor or from Formica Corporation trained representatives in sales offices throughout the country. To assist these representatives, Formica Corporation maintains a sales and technical services staff in Cincinnati, Ohio. For technical assistance, contact your distributor or sales representative; write the company directly at Formica Corporation Technical Services Department, 10155 Reading Road, Cincinnati, OH, 45241; call (513) 786-3578 or 1-800-FORMICA™; or fax (513) 786-3195. In Canada, call 1-800-363-1405. In Mexico, call (525) 530-3135.

Formica is a sublicensed trademark to Formica Corporation. Formica and the Formica Anvil logo are registered trademarks of The Diller Corporation. 1-800-FORMICA is a trademark of The Diller Corporation. The products and manufacturing processes of Formica Corporation are protected under U.S. and foreign patents.

All ® brands are registered trademarks of the respective owners. All ™ brands are trademarks of the respective owners.

For warranty information, please visit [www.formica.com](http://www.formica.com) or call 1-800-FORMICA™.

©2019 Formica Corporation  
Cincinnati, Ohio 45241